

[Automotive Industry](#)[Autonomous Driving](#)[Aerospace Industry](#)[Commercial & Off-Highway Vehicles](#)[Electric Drives](#)[Other Fields](#)[Technologies & Standards](#)[All Articles](#)

NEWS



Renault: Cumulative Test

Power

SCALEXIO and PHS systems combined in a test factory for powertrain ECUs



Interview: We Must Embrace New Technologies

e.GO Mobile proves that emission-free driving is possible with today's technology, at low cost, and with a...



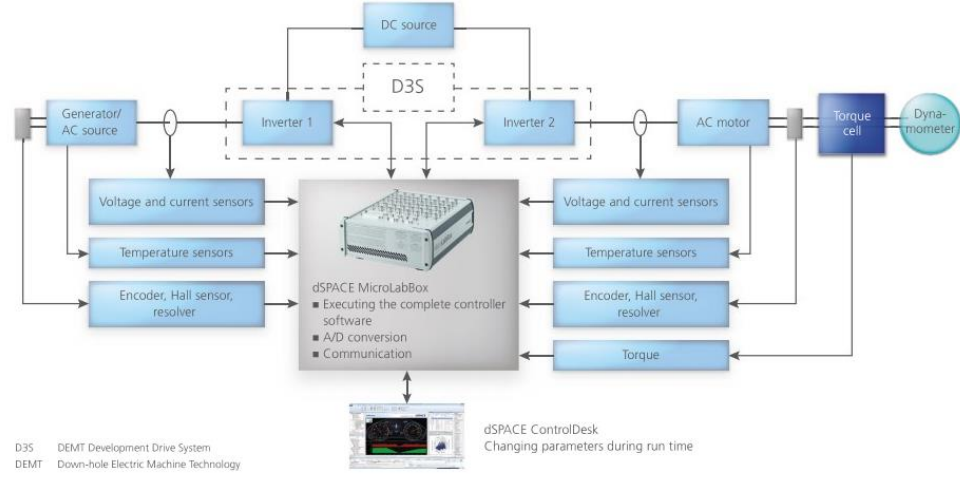
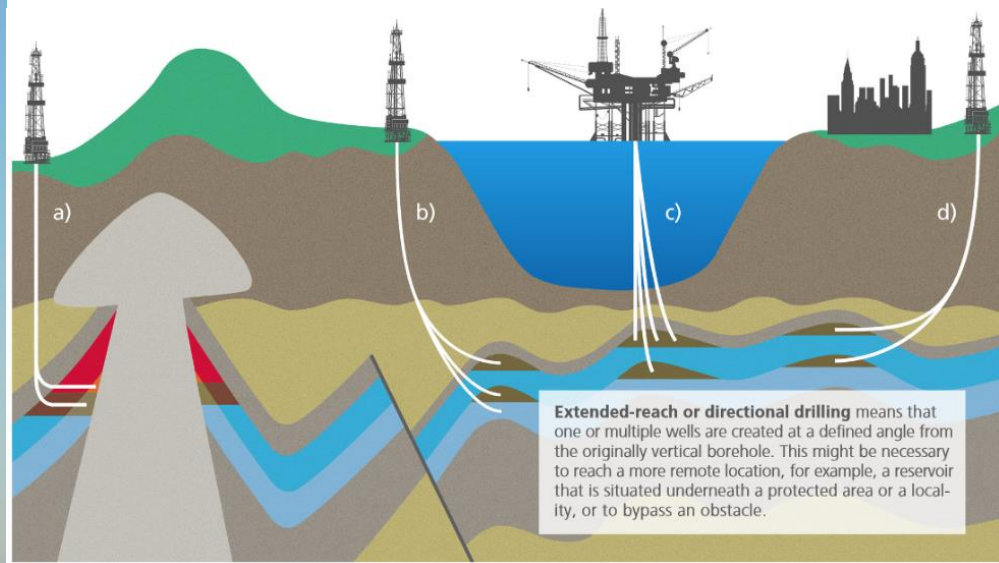
PATAC: Automatic Safety

Tests for autonomous driving based on SOTIF

[Read More](#)

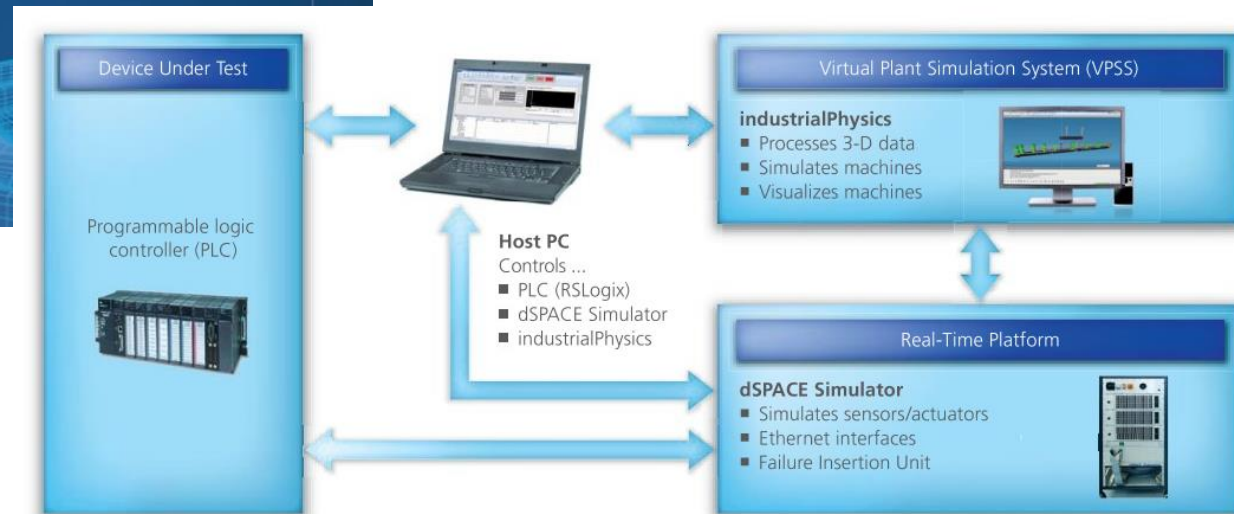


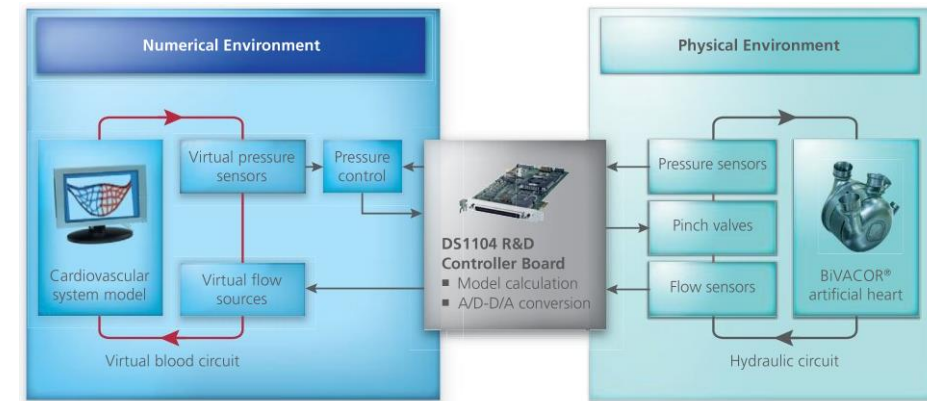
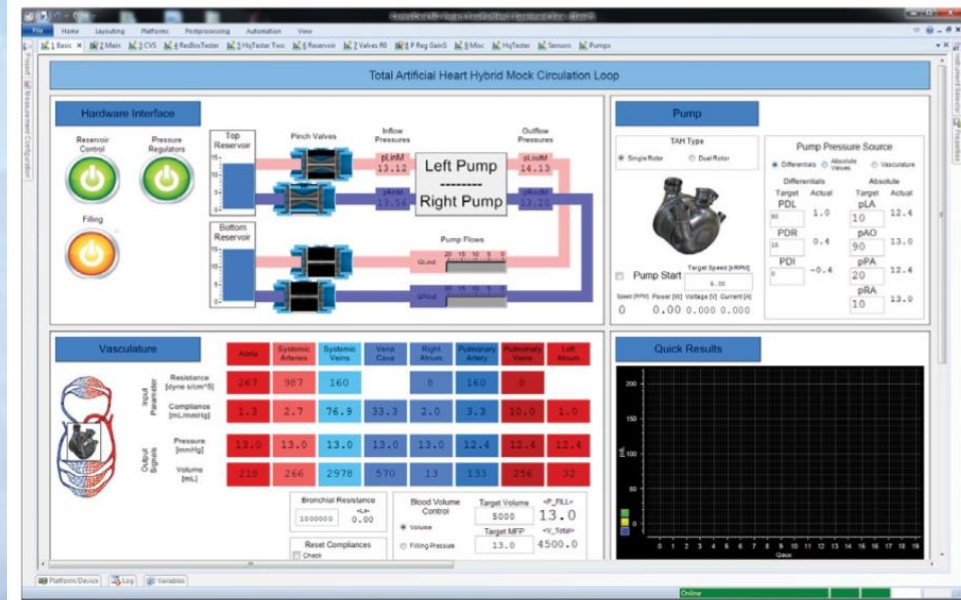
Intelligentné vrty





Virtuálne mlieko vo virtuálnych kartónoch

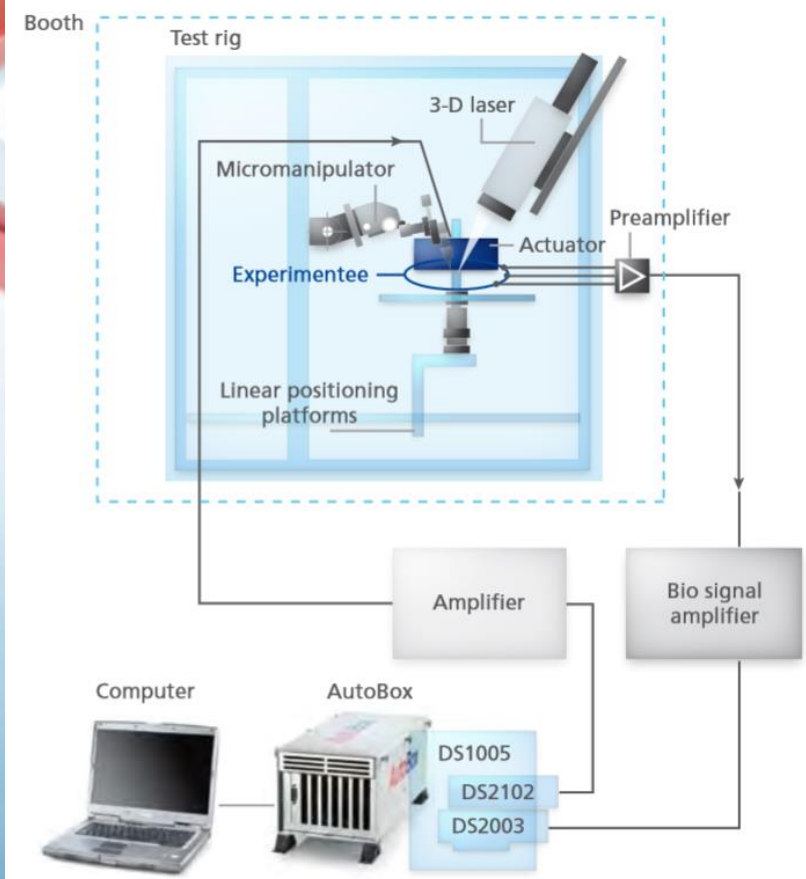




Virtuálne krvné cievy



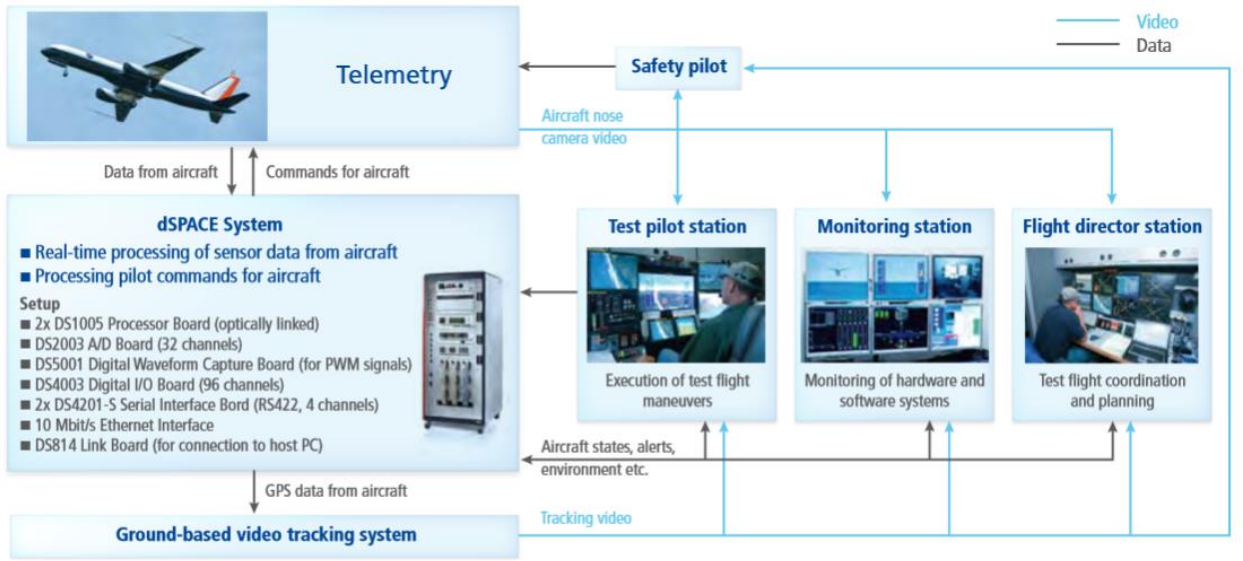
Samé ucho





Zvýšenie
bezpečnosti okien

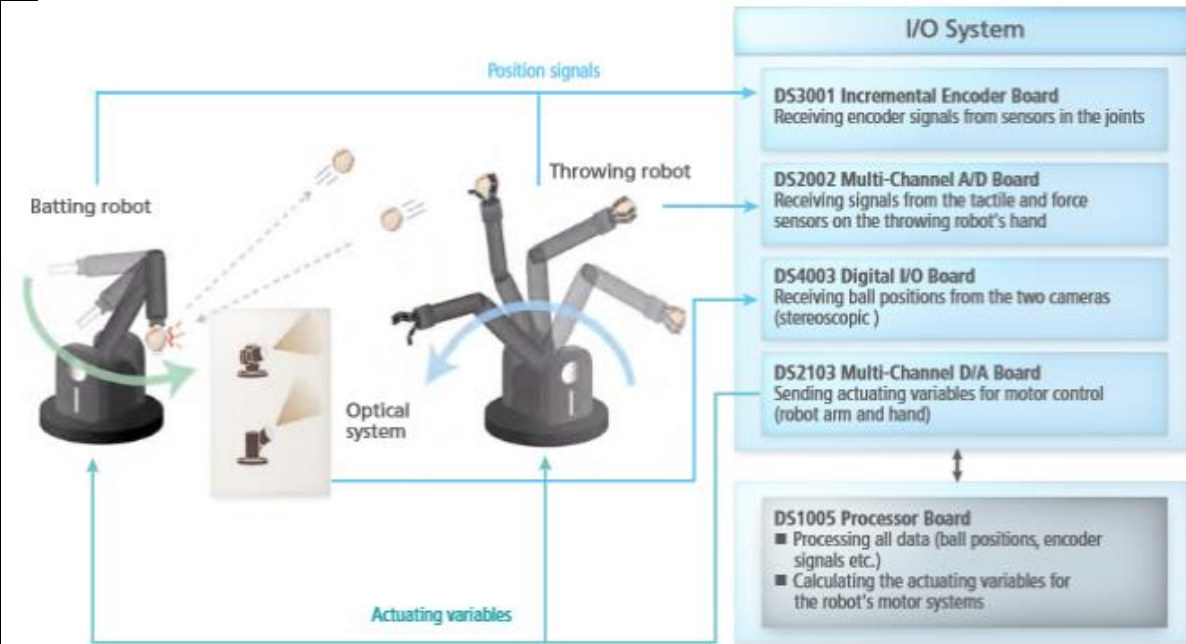




Top model pre NASA



Home Run v Labáku





Superbike Success



Turbína na palube

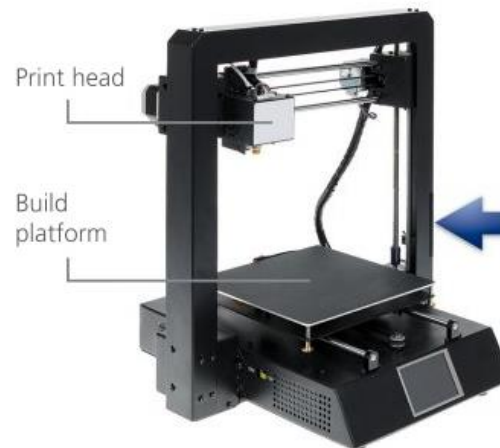


Udržiavanie kontaktu pri 300 km/h



From 3-D Printing to 3-D Sprinting

A unique algorithm
enables 3-D printing
at twice the speed



DS1007 PPC
Processor Board



DS5203 FPGA
Board

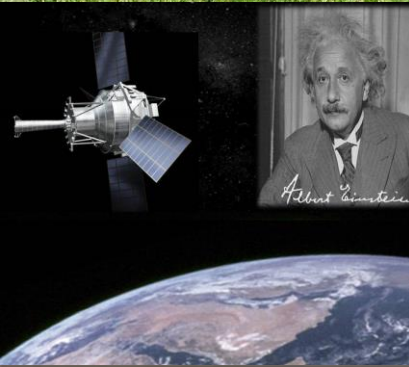


dSPACE real-time system, consisting
of a DS5203 FPGA Board and a
DS1007 PPC Processor Board.

Acc. Limit	1 m/s ²	3 m/s ²	5 m/s ²	10 m/s ²	30 m/s ²
Printing Time	3:59 h	2:42 h	2:21 h	2:06 h	1:50 h
Baseline					N/A
FBS					



New Energy –
Wind and Sun Bring Independence
Purely regenerative energy supply for an entire island.





MicroLabBox

RAPID CONTROL PROTOTYPING

Kompaktný vývojový systém do laboratórií, s viac ako 100 I/O kanálmi rôznych typov a programovateľným FPGA

1) Inputs/Outputs

AI_n: 8x 14-bit, 24x 16-bit, -10 - 10V

AO_u: 16x 16-bit, -10 - 10V

DigIO: 60 bidirectional (12 RS422/485 type)

2) I/O funkcionality

6 x Encoder sensor input

2 x Hall sensor input

2 x EnDat interface

2 x SSI interface

Synchronous multi-channel PWM

Block commutational PWM

3) Rozhrania

USB (flight recorder)

2x CAN

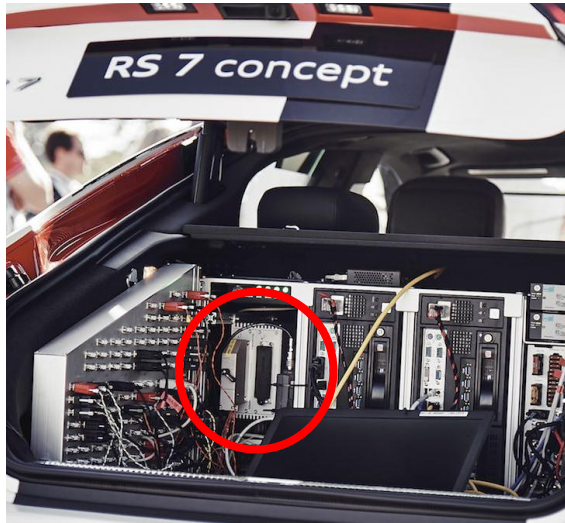
2x UART

1x LVDS

Gigabit Ethernet



AUDI RS7 Concept



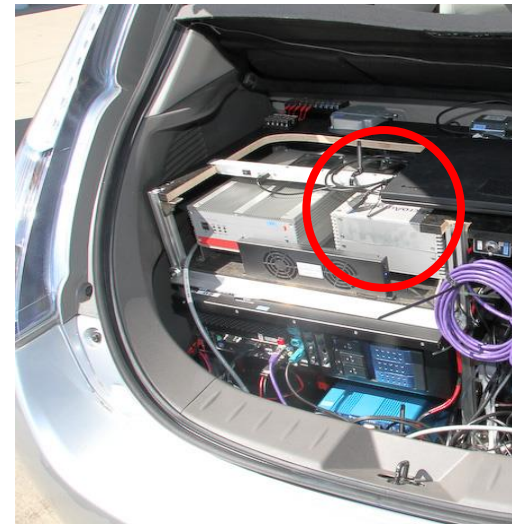
ZF



RCP skracuje vývojový čas tým, že umožňuje rýchlo vyvinúť, optimalizovať a testovať nové riadiace stratégie v reálnom prostredí bez nutnosti manuálneho programovania. Pomáha včasne detekovať a okamžite opraviť chyby dizajnu.

RCP

MODEL-BASED DESIGN



Nissan



Porsche
InnoDrive



SCLX AutoBox

RAPID CONTROL PROTOTYPING

Výkonný in-vehicle systém s odolnosťou voči šokom a vibráciám a vysokou teplotnou odolnosťou

1) Rozhrania a I/O

Modulárny systém
SCLX I/O boards
6 slotov

2) Odolnosť

0°C – 55°C
5% - 95 %
SO 16750 – 3:2012/4.2.2 /4.1.2.4

3) Integrovaný zdroj

12V, 24V, 48V



ECU „si myslí“, že je v jazdiacom vozidle v reálnom prostredí

HARDWARE IN THE LOOP

MODEL-BASED DESIGN



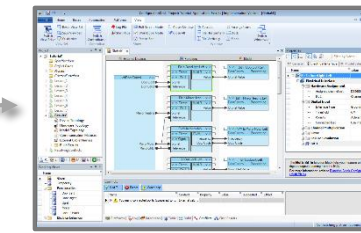
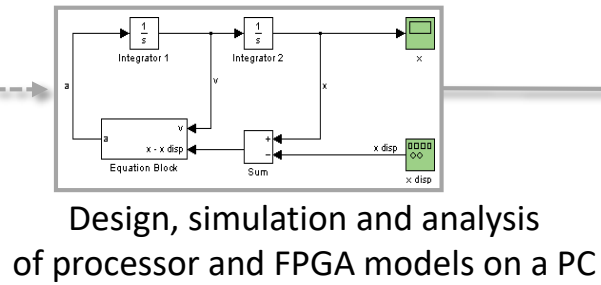


PORTFÓLIO HIL

HARDWARE-IN-THE-LOOP

SCALEXIO flexibilné a modulárne systémy v rôznych veľkostiach pre HIL projekty v rôznych priemyselných odvetviach ako automobilový priemysel, letectvo, zdravotníctvo, doprava alebo výskum.

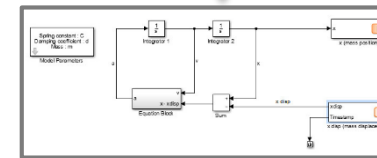
Poskytuje výkonnú real-time technológiu a komplexnú podporu zberníc pre náročné aplikácie dneška a budúcnosti ako autonómne vozidlá, elektromobilita sieťová komunikácia.



automatická
implementácia
MATLAB/
Simulink
modelov na
dSPACE HW



Implementation on
real-time hardware



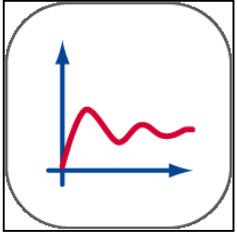
WORKFLOW

HARDWARE-IN-THE-LOOP

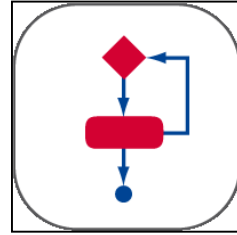
Dizajn v Simulink, I/O konfigurácia v ConfigurationDesk, automatické vygenerovanie a implementovanie aplikácie na real-time platformu, monitorovanie a experimentovanie v ControlDesk



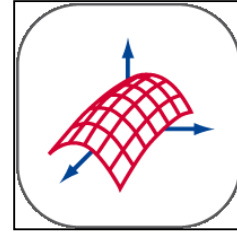
Data Management (e.g., test management, workflow management)



Instruments and simulation control



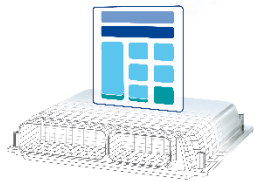
Test automation and evaluation



Road and maneuver definition



Visualization and animation



Unit under test

FIU

Load board



Real-time processing unit

Battery simulation, power supply

I/O hardware

Buses



Simulation model

Implementation software

ĎAKUJEM

janat@humusoft.cz